



SOLID WASTE/BROWNFIELDS



INSIDE THIS ISSUE:

Asbestos	2
Recycling	3
Elmo Cash Store	4
Fuel Oil Release	4
Methamphetamine	5
Illegal Dumping	6

ENVIRONMENTAL PROTECTION DIVISION TRIBAL RESPONSE PROGRAM

Program

In 1991, the Tribes formed the Division of Environmental Protection within the Natural Resources Department. The purpose of the Division is to protect human health and the environment for all Reservation residents. The Division of Environmental Protection has 10 programs including the Tribal Response Program (TRP). The program conducts inspections, deals with compliance issues and concerns, and project over-site throughout the exterior boundaries of the reservation, the TRP goal is to serve and protect our reservation's natural resources and the health of our Tribal people for our future generations.

Tribal Response Program has completed the following:

- Property inventory (Baseline Brownfield Inventory)
- Conducted several environmental assessments on properties on the Reservation
- Conducted environmental cleanup activities on properties on the Reservation
- Created a Public Record



Marlene McDanal, Program Manager.

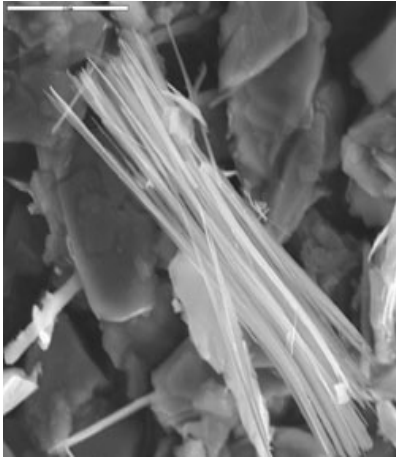
Evelyn Charlo, Brownfields Aide.

Program Highlights

CSKT's Tribal Response Program (TRP) was created in 2003 and focuses on assessing and cleaning up a portion of its 136 inventoried brownfields and reusing them for housing and/or green space. CS&KT completed several assessments with its Section 128(a) TRP funding and received its first EPA Brownfields Cleanup grant in 2007 that assisted in cleaning up the Elmo Cash Store (Brownfield site). CS&KT TRP Staff addressed a wide range of the reservation's contaminated land issues, from dump sites, to lead issues, to gas stations. They have taken on the unique challenges associated with meth labs, asbestos, Junk vehicle issues, and used oil spill/releases. CSKT Brownfield TRP staff developed their broad expertise through numerous trainings, including courses on Phase I and Phase II assessments, asbestos, meth labs, lead, Environmental management and Resource Conservation, Recovery Act (RCRA) training, and compliance. While CS&KT Brownfield TRP staff does utilize consultants, this training enables TRP staff to provide project oversight, analyze assessment results and confirm cleanups.

With great effort and hard work the Tribal Response Program wrote a competitive cleanup grant proposal for the cleanup of the Former Joseph allotment adjacent to the Former Elmo Cash Store and recently found out that the program was awarded the competitive cleanup grant in the amount of \$200,000; these funds will be entirely used for the clean up of the former Joseph allotment in Elmo, MT.

The TRP will be starting the cleanup project once all paper work is complete.



Asbestos seen through a microscope.

What is Asbestos?

Asbestos is a group of naturally occurring minerals made up of long, thin fibers. Asbestos is mined from the ground like coal. There are six types of asbestos:

- **Chrysotile**- Most common- White
- **Amosite**- Less common- Brown
- **Cocidolite**- Rare- Blue
- **Tremolite, Actinolite and Anathophyllite**- All less common.

Where Asbestos Can Be Found?

Asbestos fibers are used in thousands of products and materials because of the unique properties such as flexibility; resistance to thermal; high intensity strength; chemical and electrical resistance.

Asbestos containing material:

- Vinyl floor tile
- Fire blankets & doors
- Cement siding
- Vinyl sheet flooring
- Boiler insulation
- Cement pipes
- Roofing shingles
- Chalkboards
- Caulking/Putties
- Fireproofing materials
- Blown-in insulation
- Cement siding



Asbestos house in Dixon, Montana.

How Is Asbestos Harmful?

The small asbestos fibers are inhaled and cause asbestos-related diseases. If they aren't expelled through coughing or mucus secretion they become embedded in the lung. Inhaling asbestos is related to

Three major diseases:

- **Asbestosis**- Asbestos cause scarring of the lung that eventually restricts the ability to breathe.
- **Lung cancer**- Asbestos increases the risk of lung cancer, especially when exposed to tobacco smoke.
- **Mesothelioma**- Asbestos is thought to be the cause of this deadly cancer effecting the lung lining and chest wall.

IF YOU WERE TO COME INTO CONTACT WITH ASBESTOS FIBERS YOU WILL SHOW SIGNS OF CONTAMINATION 20 TO 30 YEARS LATER.



*Did you know.....*the Montana Department of Environmental Quality's asbestos regulations states that every public and commercial building must go through asbestos inspection, regardless the age before any renovation or demolition? If not inspected by a qualified asbestos expert this may result in enforcement actions including fines, penalties and most importantly endangering peoples health.

Recycling

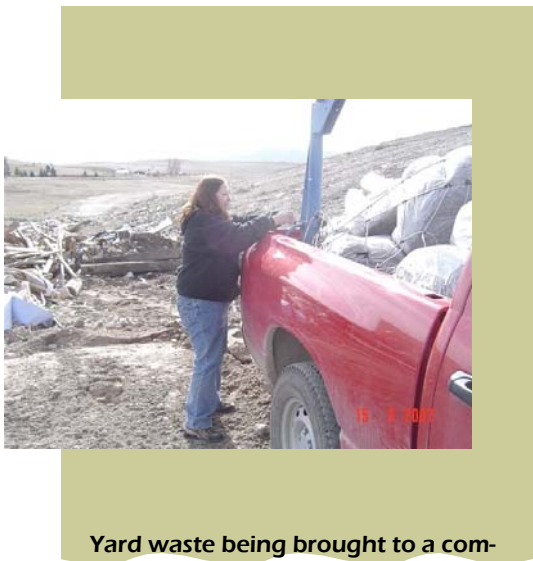


The Solid Waste/Brownfields Program has been gathering all recyclable material from tribal departments and bringing them to the transfer station and Pacific Recycling. Office paper, newspaper, cardboard, aluminum and tin cans, and plastic bottles; materials that are collected by the solid waste program and brought to the transfer station. Aluminum cans are saved and brought to Pacific in Missoula, money from the recycling goes into the River Honoring Bike give-a-way and recycled activity books and etc.... also able to purchase some recycling containers.

Since October 2009 the Brownfields program has recycled over two tons of recyclable material. If you are interested in recycling within your tribal department contact Marlene (contact info on back). She will get you set up and even come get your recyclable materials when needed! If you are already recycling at your office, thank you. **Remember, only you can make a difference!**

Why Is Recycling Important?

- Saves energy, water and money.
- Preserves landfill space
- Creates new jobs
- Preserves wildlife habitat
- Reduces water and air pollution
- Reduces the amount of chemicals added to a new product



Yard waste being brought to a compost pile.

Reduce:

- Carry a refillable water bottle and coffee mug
- Walk, bike, or car pool
- Print on both sides of paper
- Have bills sent electronically and pay online
- Compost food waste
- Take your own grocery bags to the store.

Reuse:

- Use items more than once
- Don't think you will use it, don't buy it!

If you don't recycle here's how long it will take to decompose:

Aluminum can: 550 years (but if recycled, can be reused within 6 weeks!)

Paper: 2-3 weeks

Cardboard: 4-6 weeks

Plastic bag: 500 years

Plastic beverage bottle: 450 years

Other materials:

Disposable diaper: 500-600 years

Cigarette butt: 10 years

**Sources: U.S. National Park Service; Mote Marine Lab; New Hampshire Department of Environmental Services.*

The Lake County Recycling/Transfer Station

Takes:

- Newspaper
- Magazines and catalogs
- Phone books/no spiral binding
- Office paper
- Corrugated cardboard & brown paper bags
- Aluminum & tin cans
- Plastic bottles

Also taken at the Transfer Station:

- Used motor oil & antifreeze
- Vehicle (lead) batteries
- Tires (large loads to tire depot)
- Refrigerators, freezers & appliances that may have Freon



ELMO CASH STORE

In the early 1920's Elmo Cash Store was built, in December 1994 a gasoline release was discovered while removing existing tanks to be replaced with a new dual compartment tank.

During the inspection, before demolition of the building asbestos was found in the window glazing, vinyl floor/mastic and rolled roofing. All asbestos containing building materials (ACBMs) were abated and transported to Allied Waste landfill in Missoula for disposal. Slish and Kootenai Housing Authority (SKHA) demolished the store building for excavation and removal of petroleum-impacted soil beneath the building. All demolition debris was removed for off-site disposal.

A 12,000 gallon gasoline underground storage tank (UST) and other piping product was removed in May 2010 by a licensed tank remover. The tank was transported off-site.

Approximately 2,700 cubic yards of petroleum-impacted soil was excavated and transported to a land farm. Nearly 1,100 cubic yards of clean over burden material was used for backfilling. A vapor sys-



Elmo cash store cleanup.

tem was installed during backfilling to vent petroleum soil vapors that may accumulate. Samples were taken from the wells in November 2010 were there was a low concentration of petroleum compounds found.

The site is still being monitored and more soil vapor sample will be taken in the future.



Elmo store before demolition.

FUEL OIL RELEASE



Dale Nelson, DES and Marlene McDanal.

In January 2011 the Tribal Brownfields Response Program got a call from a family in need of help. A tribal residence of the Flathead reservation noticed that their storage tank was leaking fuel oil. There was approximately 150 gallons of fuel that released into the soil at the residence. Human health as well as ground and drinking water all where potential treats.

Even though there was no funding available CS&KT Forestry, NRD, and DES, all worked together with Marlene McDanal on getting the fuel oil cleaned up.

First the family was evacuated and then the site was fully assessed then cleanup began. After further investigation more oil was discovered beneath the home. To complete oil removal the tank

needed to be moved out of the way. The oil was then soaked up with boons and oil pads. The contaminated soil was transferred to an approved land farm.

After the house was aired out the family was able to move back in.



A hole full of fuel was discovered adjacent to the storage tank.

RIVER HONORING 2011



The Natural Resources Department Solid Waste Program recently gave away 2 brand new bicycles to Meghan Gambrel of Polson Middle School and John Anthony (not pictured) of NKwUSM school located in Arlee during the annual river honoring event May 2011. Meghan and John were selected via drawing out of over 600 students that attended the spring event.

The proceeds of purchasing the bikes were made from recycling misc. materials for the past year. The Tribal Response Program would like to thank the students for listening and learning about proper solid waste management and recycling efforts that they can do at home and school to make our world a better place to live.

lemlmtš



Meth

Methamphetamine is a very powerful man-made stimulant. Meth releases high levels of dopamine, which stimulates the brain cells, enhances mood and body movement, and regulates feeling of pleasure. When Meth is used repeatedly it "turns off" the ability to produce dopamine causing Meth users to depend on the drug for pleasure. Over time users are unable to experience and kind of pleasure other than more and more Meth.

Environment- Meth generates five or more pounds of waste for every one pound of meth. Methamphetamine waste is usually dumped down sinks, sewers, rivers, streams, and outdoors causing contaminations in topsoil, groundwater and surface water.



Risk to children:

- Exposure to explosive, flammable, toxic ingredients stored in kitchens cabinets, bathrooms and bedrooms
- Access to meth and paraphernalia
- Exposure to high risk population sexual abusers, violent drug users
- Neglect including poor nutrition and poor living conditions
- Children can test positive for meth after living among users or manufacturers and being exposed to contaminated surfaces, clothing, or food.
- Children's health worsens each day they are around meth; leaving sores, badly running nose, can't sleep most of the night, lack of interest in play, moody and unhappy.



Meth waste found on the side of a dirt road.

Illegal Dumping



Illegal Dumping

Illegal dumping is the disposal of waste in an un-permitted area. Also known as “open dumping” or “midnight dumping”. Some of the concerns for illegal dumping include public health & safety, property values, wildlife and environment concerns.

Here on the Flathead Reservation illegal dumping has been a problem for many years. The Tribal Response Program inspects the site then with further investigation the site is cleaned up.

Who Is Doing The Illegal Dumping?

People who don't want to pay the disposal fee or they don't want to waste their time and put in the effort for proper disposal. We most often find evidence of who is doing the actual disposal of their garbage.

WE KNOW WHO YOU ARE!



Material usually found in a illegal dump:

- Construction and demolition waste such as dry wall, roofing shingles, lumber, bricks, concrete and siding
- Abandoned automobiles, auto parts and scrape tires
- Appliances or “White goods”
- Furniture
- Yard waste
- Household trash
- Hypodermic needles
- Disposed used oil and other fluids



Illegal dumping site in St. Ignatius, Montana.

Confederated Salish & Kootenai Tribes

Marlene McDanal, Solid/
Hazardous Waste Specialist II
P.O. Box 278
Pablo, MT

Phone: (406) 883-2888 Ext.
7215



Help Protect Our Land

If you think that you have found a possible brownfields site or an illegal dump site that needs attention contact Marlene McDanal with information containing where the site is.

www.cskt.org