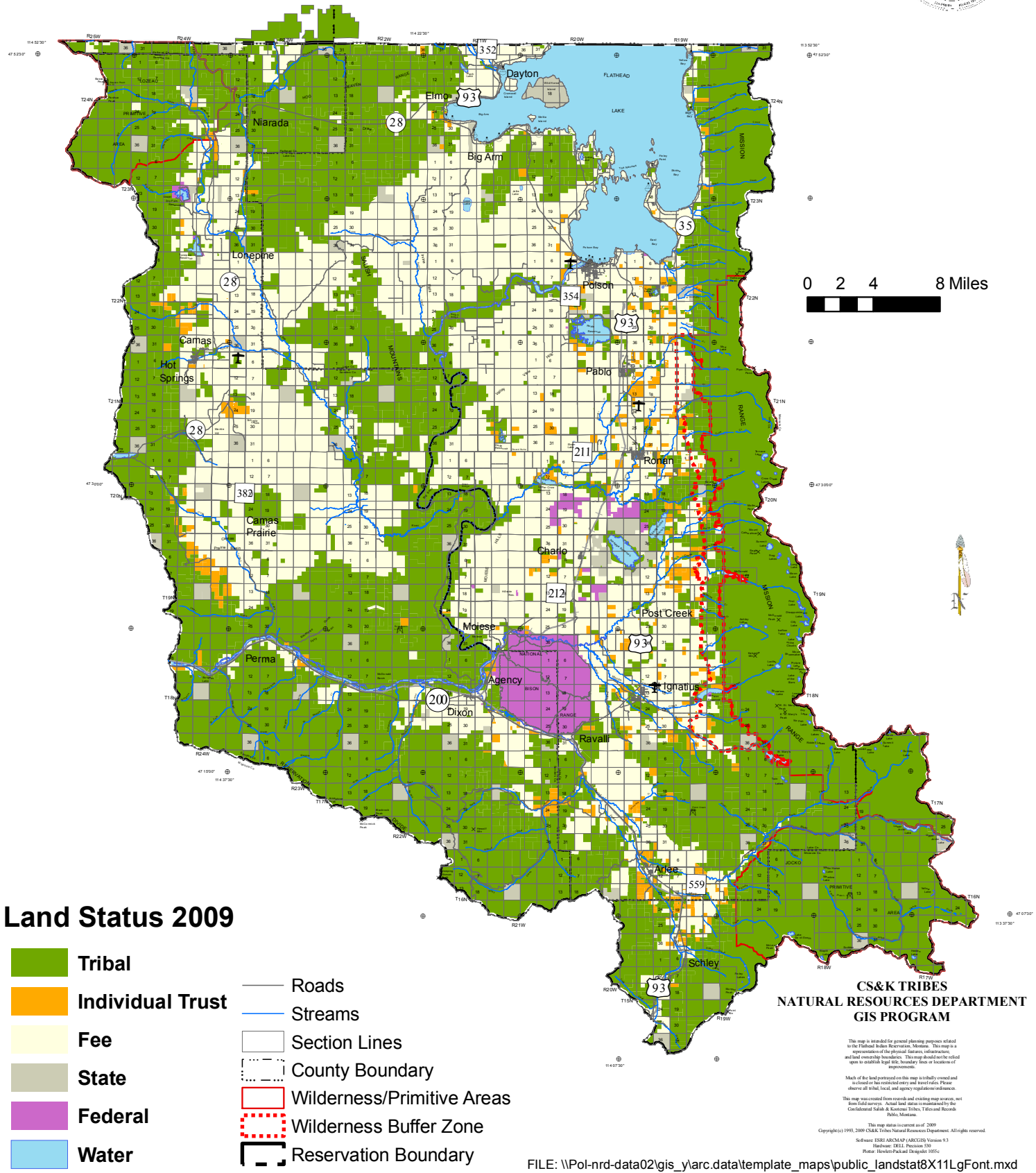
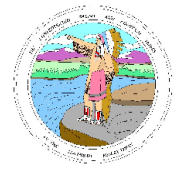
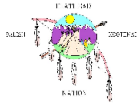


THE CONFEDERATED SALISH AND KOOTENAI TRIBES OF THE FLATHEAD NATION



Land Status 2009

- Tribal
- Individual Trust
- Fee
- State
- Federal
- Water
- Roads
- Streams
- Section Lines
- County Boundary
- Wilderness/Primitive Areas
- Wilderness Buffer Zone
- Reservation Boundary

**CS&K TRIBES
NATURAL RESOURCES DEPARTMENT
GIS PROGRAM**

This map is intended for general planning purposes related to the Flathead Indian Reservation, Montana. This map is a representation of the physical features, infrastructure, and land ownership boundaries. This map should not be relied upon to establish legal title, boundary lines or locations of improvements.

Much of the land portrayed on this map is federally owned and is closed to fee mineral entry and lease sale. Please observe all tribal, local, and agency regulations/ordinances. This map was created from records and existing map sources, not from field surveys. Actual land status is maintained by the Confederated Salish & Kootenai Tribes, Titles and Records Public, Montana.