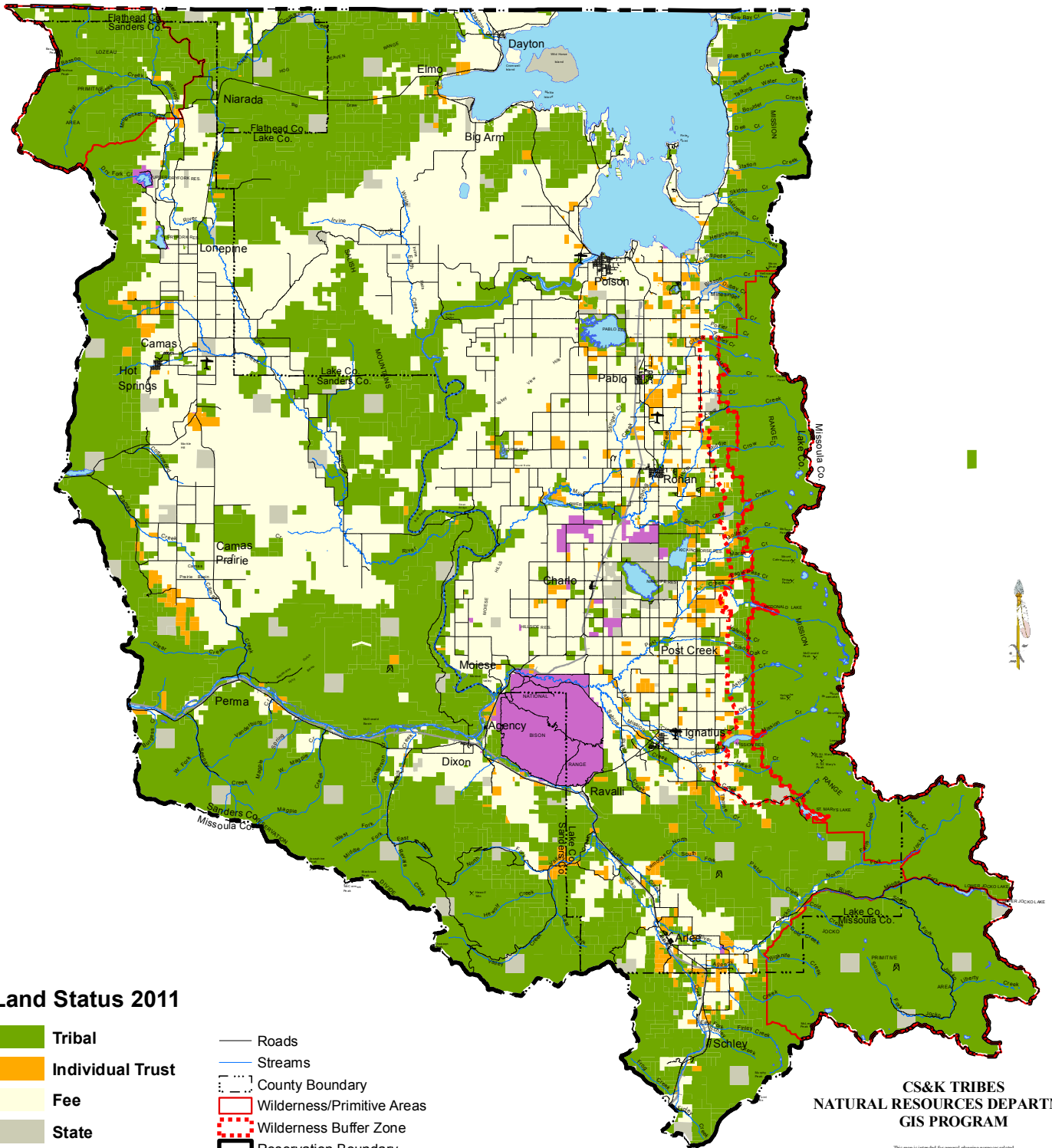
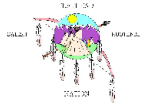


THE CONFEDERATED SALISH AND KOOTENAI TRIBES OF THE FLATHEAD NATION



Land Status 2011

- Tribal
 - Individual Trust
 - Fee
 - State
 - Federal
 - Water
- Roads
 - Streams
 - County Boundary
 - Wilderness/Primitive Areas
 - Wilderness Buffer Zone
 - Reservation Boundary



CS&K TRIBES NATURAL RESOURCES DEPARTMENT GIS PROGRAM

This map is intended for general planning purposes related to the Flathead Indian Reservation, Montana. This map is a representation of the physical features, infrastructure, and land ownership boundaries. This map should not be relied upon to establish legal title, boundary lines or location of improvements.

Much of the land portrayed on this map is either owned and is closed or has restricted entry and travel rules. Please observe all tribal, local, and agency regulations/ordinances. This map is created from records and existing map sources, not from field surveys. Actual land status is maintained by the Confederated Salish & Kootenai Tribes, Titles and Records, Pablo, Montana.

This map status is current as of 2011.
Copyright (c) 1995, 2011 ESRI, The National Resources Department. All rights reserved.
Software: ESRI ARCMAP/ARCGIS Version 9.3
Hardware: DELL Precision 570
Printer: Hewlett-Packard DesignJet 1050c